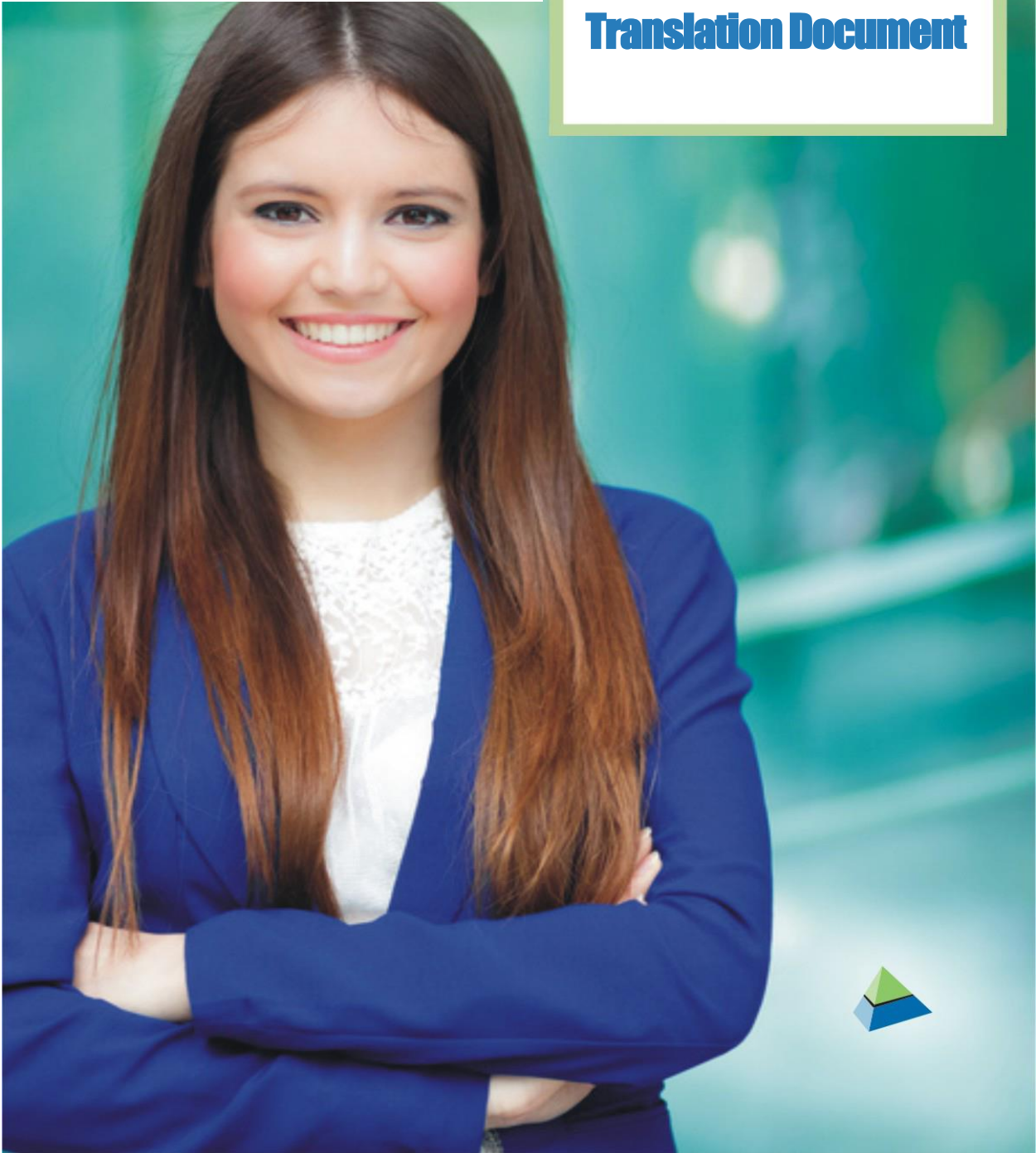


BATCHMASTER® ERP
18.2

User Guide

BatchMaster ERP with SAP Business One
BatchMaster Solutions
for Process Manufacturers

Translation Document





Copyright and Legal Information

Copyright

BatchMaster ERP with SAP Business One 18.2 – Translation User Guide © 2025 by BatchMaster Software. All rights reserved.

Your right to copy this document is limited by copyright law and the terms of the license agreement. As a software licensee, you may make a reasonable number of copies or printouts for your own use. Making copies for any other purposes constitutes a violation of copyright law.

Trademarks

The names of actual companies and products mentioned herein may be trademarks or registered marks of their respective owners in the United States or other countries.

The names of companies, products, persons, and/or data used in the examples are fictitious and are in no way intended to represent any real individual, company, product, or event, unless otherwise noted.

Warranty Disclaimer

BatchMaster Software disclaims any warranty regarding the example data in this documentation, including the warranties of merchantability and fitness for a specific business use.

Limitation of Liability

The content of this document is provided for informational use only, is subject to change without notice, and should not be construed as a commitment by BatchMaster Software. BatchMaster Software assumes no liability for any errors or inaccuracies that may appear in this document. Neither BatchMaster Software nor anyone else who has been involved in the creation, production, or delivery of this documentation shall be liable for any indirect, incidental, special, exemplary, or consequential damages, including but not limited to any loss of anticipated profit or benefits, resulting from the use of this documentation nor the examples contained herein.

License Agreement

Use of this product is covered by a **Software License, Services and Support Agreement** signed when your organization purchased BatchMaster ERP with SAP Business One.

Disclaimers

The information provided herein is not intended to replace the statutes, rules, or approved procedures that apply to your business. Instead, you should use this information to ensure compliance with internal, customer, and regulatory requirements. This training manual is considered to be proprietary and confidential and may not be reproduced for any reason other than stated below without the prior written consent of BatchMaster Software.

Exclusion




This training manual has been prepared exclusively for ERP client end-user training. All other uses are prohibited without prior written consent from BatchMaster Software.

BME-B1 18.2 Translation Training Manual © 2025 by BatchMaster Software. All rights reserved.



About the Manual

Symbols & Conventions

| Symbol | Description |
|---|-------------------|
|  | Note |
|  | Mandatory setting |
|  | Tips |

| Convention | Description |
|---|---------------------------------------|
| Italicized (<i>Sales Order Entry</i>) | Module name, screen name & components |
| “ ” (“BatchMaster ERP with SAP Business One Hardware and Software Requirements Document”) | Reference Document |

| Abbreviation | Description |
|--------------|------------------------------|
| ERP | Enterprise Resource Planning |
| XML | Extensible Markup Language |



Contents

| | | |
|----------|--|----------|
| 1 | DOCUMENT OVERVIEW | 1 |
| 1.1 | Who Should Read This Document? | 1 |
| 1.2 | What’s New in This Release? | 1 |
| 2 | BatchMaster ERP Translation Utility | 1 |
| 2.1 | Key Terms Used | 4 |
| 2.2 | File | 5 |
| 2.2.1 | Generate XML From Resource | 5 |
| 2.2.2 | Exit..... | 6 |
| 2.3 | Translator..... | 6 |
| 2.3.1 | Screen Translator | 6 |
| 2.3.2 | Lookup Translator | 10 |
| 2.3.3 | CFL Lookup Translator | 12 |
| 2.3.4 | CFL Lookup Title Translator | 14 |
| 2.3.5 | HTML Screen Translator | 16 |



1 DOCUMENT OVERVIEW

BatchMaster ERP with SAP Business One (BatchMaster ERP) supports translation using the Google Translator APIs. This utility has been designed to translate its screens elements in your preferred language.

In BatchMaster ERP, you can alter the default system language to preferred language. Using the Google Translator APIs, you can set the centralized language, which can be used throughout BatchMaster ERP or set individual screen in the required language.

Moreover you can print any report in the desired language.

1.1 Who Should Read This Document?

This document is intended for anyone who is implementing the software, i.e., the customer's system administrator and the BatchMaster implementation consultant.

1.2 What's New in This Release?

Features and functionality are identical to the previous version.

2 BatchMaster ERP Translation Utility

Locate the *Translation* utility from the programs menu. The login screen appears as below. On the Login Screen you need to specify the connection parameters of the database that needs to be translated.



Login ✕

Connection Properties

| | |
|----------------|---|
| DB Server Name | <input type="text" value="172.16.13.186:30015"/> |
| DB Server Type | <input style="border-bottom: 1px solid black;" type="text" value="HANA"/> |
| DB Username | <input type="text" value="System"/> |
| DB Password | <input type="password" value="*****"/> |
| SAP Username | <input type="text" value="amita"/> |
| SAP Password | <input type="password" value="****"/> |

Click on Get Company List button.



Login: Connected ✕

Connection Properties

DB Server Name: 172.16.13.186:30015

DB Server Type: HANA

DB Username: System

DB Password: xxxxxxxxxx

SAP Username: amita

SAP Password: xxxxxx

- 16_2QASPRINT
- BMH400
- BMH401
- QAHANA162C

Choose the database in which translation is needed.



Connection Properties

DB Server Name: 172.16.13.186:30015

DB Server Type: HANA

DB Username: System

DB Password: xxxxxxxx

SAP Username: amita

SAP Password: xxxxxx

Get Company List

- 16_2QASPRINT
- BMH400
- BMH401
- QAHANA162C

Connect

To establish the connectivity, click on Connect button.

2.1 Key Terms Used

DB Server Name: Specify the name of the SQL database server.

DB User Name: Enter the username to connect with.

DB Password: Enter the password for the login.

Connect: Click to connect to the server entered.

On successful login, the application will display the *BatchMaster ERP Translation Utility* window. On the window distinct menus are listed to perform the language translation.



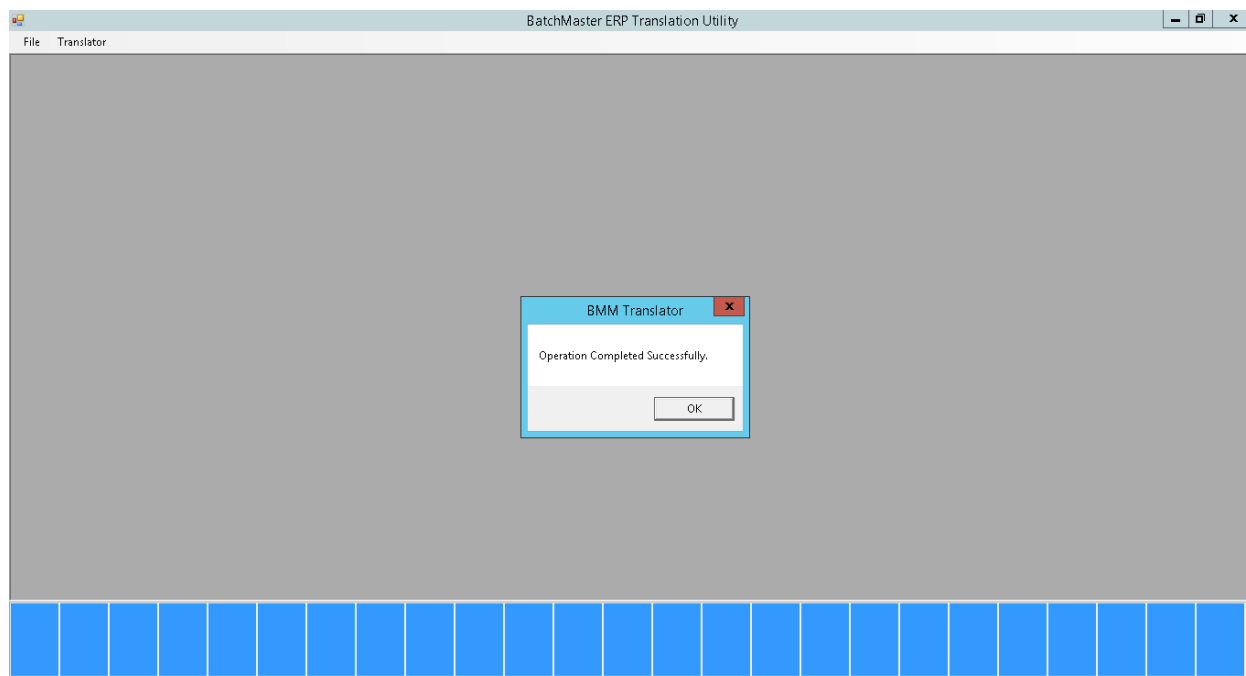
The available menu options are:

- File: The menu option contain more options each performing different task.
 - [Generate XML From Resource](#): To generate XML from the database.
 - [Exit](#): Click this button to close the application.
- Translator: The menu option contain more options each performing different task
 - [Screen Translator](#): To pick screen and upload the screen caption to server database.
 - [Resource Translator](#): To translate the screen resources.
 - CFL [Lookup Translator](#): To translate the CFL lookup elements.
 - CFL Lookup Title Translator: To translate title of CFL lookup
 - HTML Screen Translator: To translate HTML dashboard screen
 - [Crystal Report Translator](#): To translate the report in desired language.

2.2 File

2.2.1 Generate XML From Resource

In SAP, *Generate XML From Resource* is used to create a XML file of the resource.mdb file whenever any resource text is modified and saved. Click the menu option to generate the XML File. The system shows the progress bar on the bottom of the screen. Once the file is generated, the system displays a confirmation message similar to the following:



For generating the XML file the system consider the BMMResource.mdb stored at the BMM_B1_SHR location on the server. The created XML gets stored on the same location.

Note that while performing any translation the system automatically generate the XML on saving the translation.

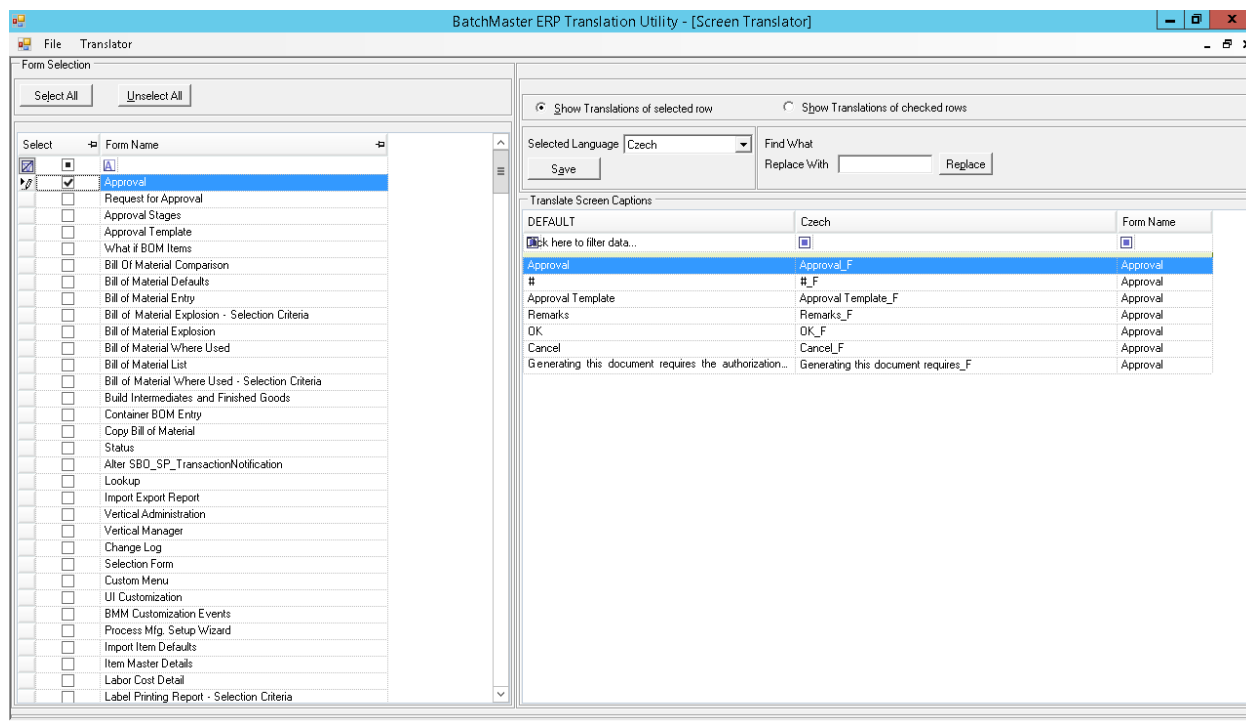
2.2.2 Exit

Click this button to quit the application.

2.3 Translator

2.3.1 Screen Translator

In BatchMaster ERP, Screen Translator is used to recognize the screen and then to transform the controls in your preferred language. The system would fetch all the screen from the BMMResource.MDB file stored at the BMM shared folder (BMM_B1_SHR).



Select All: Clicking this button select all the screens whose name is displaying in the *Form Selection* segment.

Unselect All: Clicking this button deselect all the selected screen of the *Form Selection* segment.

Select: Clicking this button select/unselect a screen. The selection would display all the controls of the selected screen in the *Translate Screen Captions* segment.

Form Name: This column displays the screen name fetched from the BMMResource.MDB file stored on the shared folder on server.

Show Translation of selected row: This option is used to display the control of the selected screen in the *Translate Screen Captions* segment. The selection should be made by selecting the row header. Once selected, the system would display all the controls of the selected screen in the *Translate Screen Captions* segment.



You can select multiple screens or rows by pressing either the **Shift** or the **Ctrl** key.

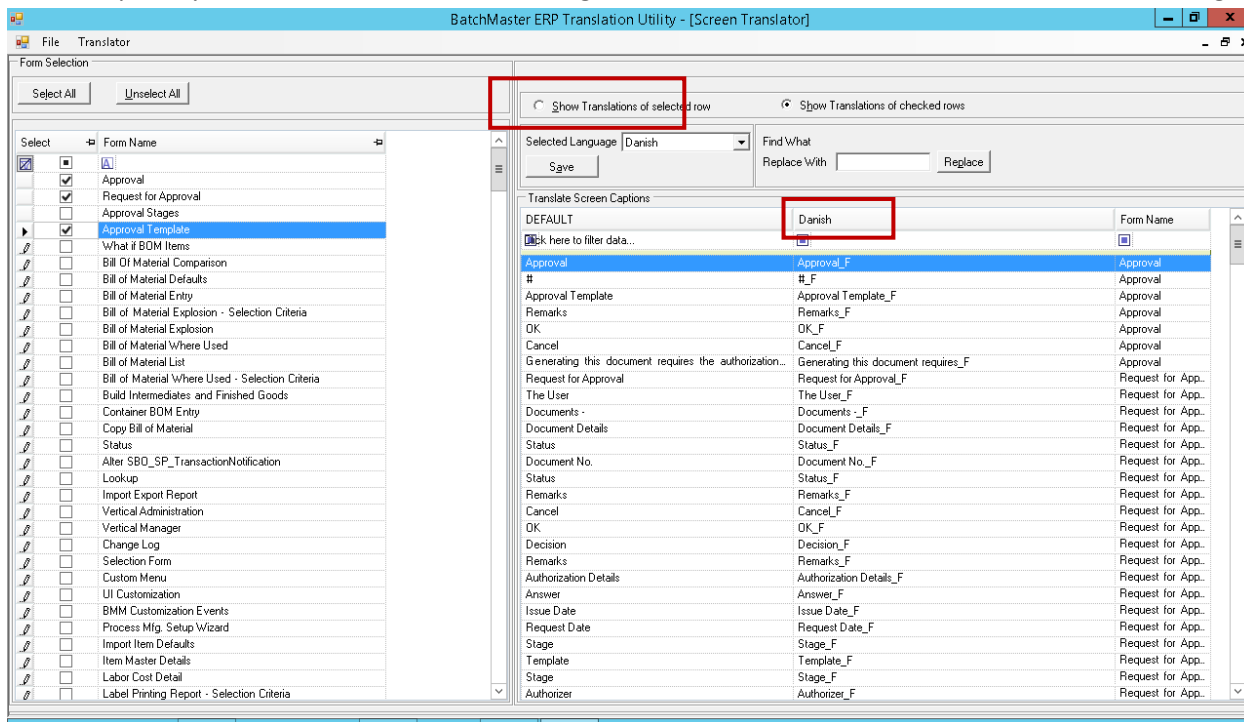
Show Translation of checked rows: This option is used to display the control of the screens being checked, in the *Translate Screen Captions* segment.

Selected Language: Using this dropdown, you can choose the language in which screen elements need to be translated. The dropdown here enlists only the languages which are supported by SAP Business



One. Once selected the system would change the column caption under the *Translate Screen Captions* segment.

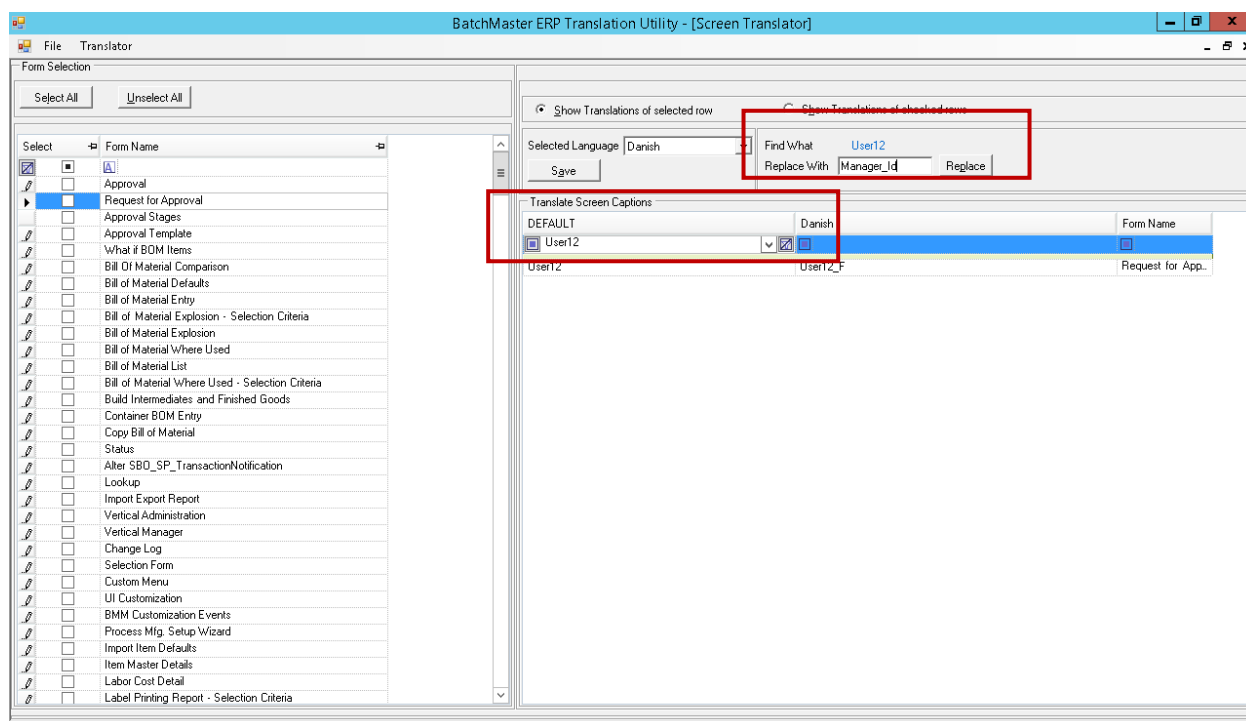
For example, if you select *Danish*, then the changes will be shown in a manner, similar to the following:



As the language column is editable you can specify the control definition as required.

Find What: Enhance search capabilities are provided within the grid to fetch the desired data. You can specify the search string in the header row of the *Translate Screen Captions* grid. The string mentioned in the header row can be viewed in this field.

For example, you are searching for USER12 control. Thus, writing the string in the header row would reflect the same content at the *Find What* field as shown below:



Replace With: Specify the string to replace the *Find What* text.

Replace: Clicking this button replaces the string specified in the *Find What* field with the string specified in the *Replace With* field.

Save: Clicking this button pick the screen translated data and upload the screen controls (transformed in user-specific language) to the server database i.e. BMMResource.MDB.

The system automatically create a XML file of the BMMResource.MDB file and store it on the same shared folder (BMM_B1_SHR) on server.

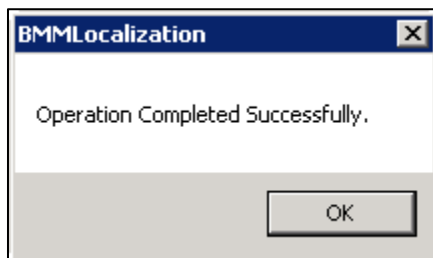
Form Name: This column is more informative when you view translations of the multiple checked rows. It displays a name of the screen.

2.3.1.1 Working with Screen Translator screen

1. Open the *Screen Translator* screen.
2. Select or check the desired screens that needs to be translated.
3. In case of row selection you need to opt the *Show Translation of Selected Row* option. This would display the controls of the selected lines or screens. Whereas, on selecting the *Show Translation of Checked Rows* option limit the display of controls for the checked in screens.
4. Using the *Selected Language* drop down choose the language in which screen translation is to be carried out.



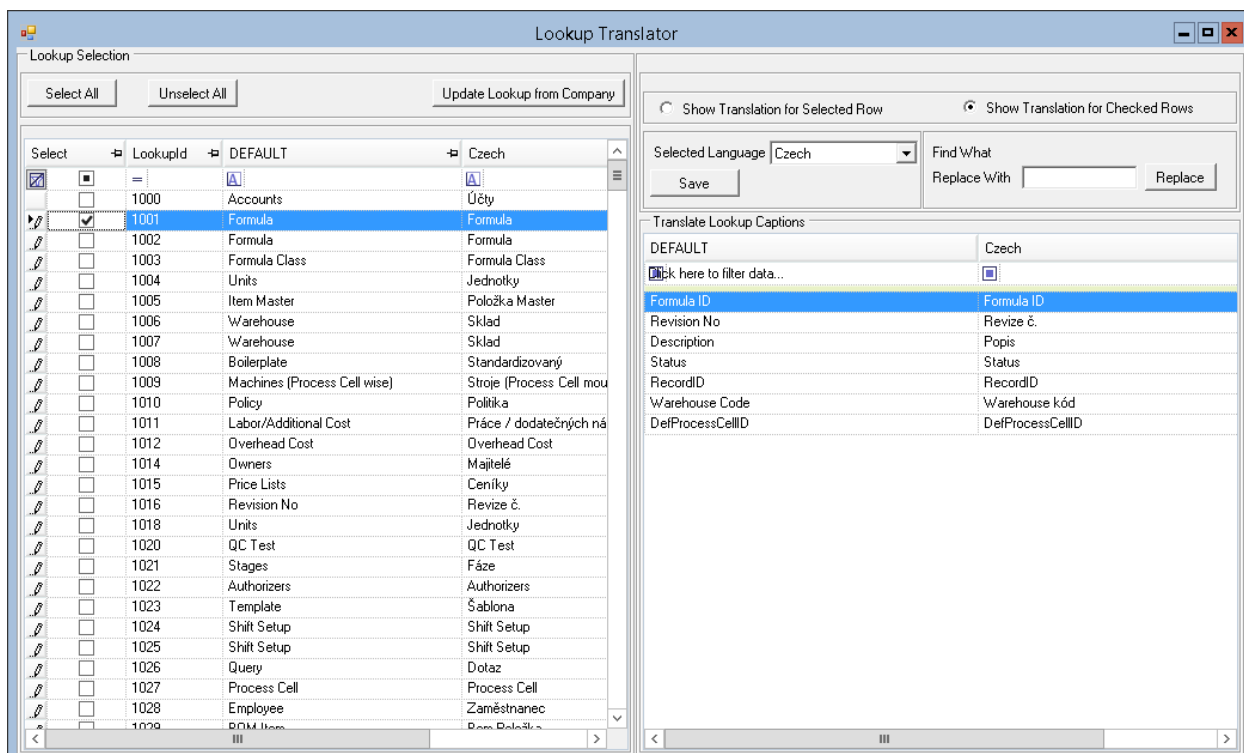
5. In the second column of the *Translate Screen Captions* grid specify the modified text for the default screen elements.
6. Click the *Save* button to save the modifications. Once saved the system display a confirmation message as shown below:



7. Click Ok. The system automatically closes the screen.

2.3.2 Lookup Translator

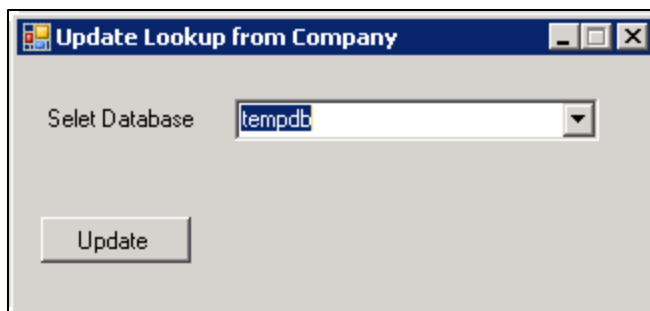
Using the Lookup Translator screen, you can translate Lookup Caption and Lookup Titles of BatchMaster ERP screen in the desired language.



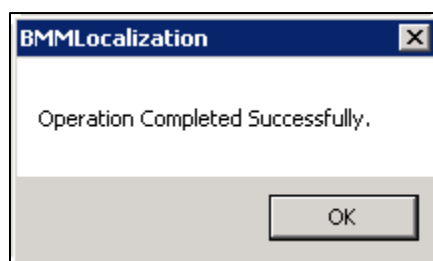
Select All: Clicking this button checks all the boxes displaying in the grid.

Unselect All: Clicking this button deselect all the selected lines of the sliding segment.

Update Lookup from Company: Clicking this button display the window from which you can select the database to choose the lookup values from.



Once updated the system confirms by displaying the message as shown below:



The system would append the lookup details in the sliding *Lookup Selection* grid.

Show translation for selected row: Selecting this option displays the screen elements of the selected row in the sliding segment.

Show translation for checked rows: Selecting this option displays the screen elements of all checked rows in the sliding segment.

Selected Language: Using this dropdown, you can choose the language in which lookup elements need to be translated. The dropdown here enlists only the languages which are supported by SAP Business One.

Find What: Enhance search capabilities are provided within the grid to fetch the desired data. You can specify the search string in the header row of the *Translate Lookup Captions* grid. The string mentioned in the header row can be viewed in this field.

Replace With: Specify the string to replace the *Find What* text.

Replace: Clicking this button replace the string specified in the *Find what* field with the string specified in the *Replace with* field.

Save: Click this button to finally save the modifications to server database i.e. BMMResource.MDB.

The system automatically create a XML file of the BMMResource.MDB file and store it on the same shared folder (BMM_B1_SHR) on server.

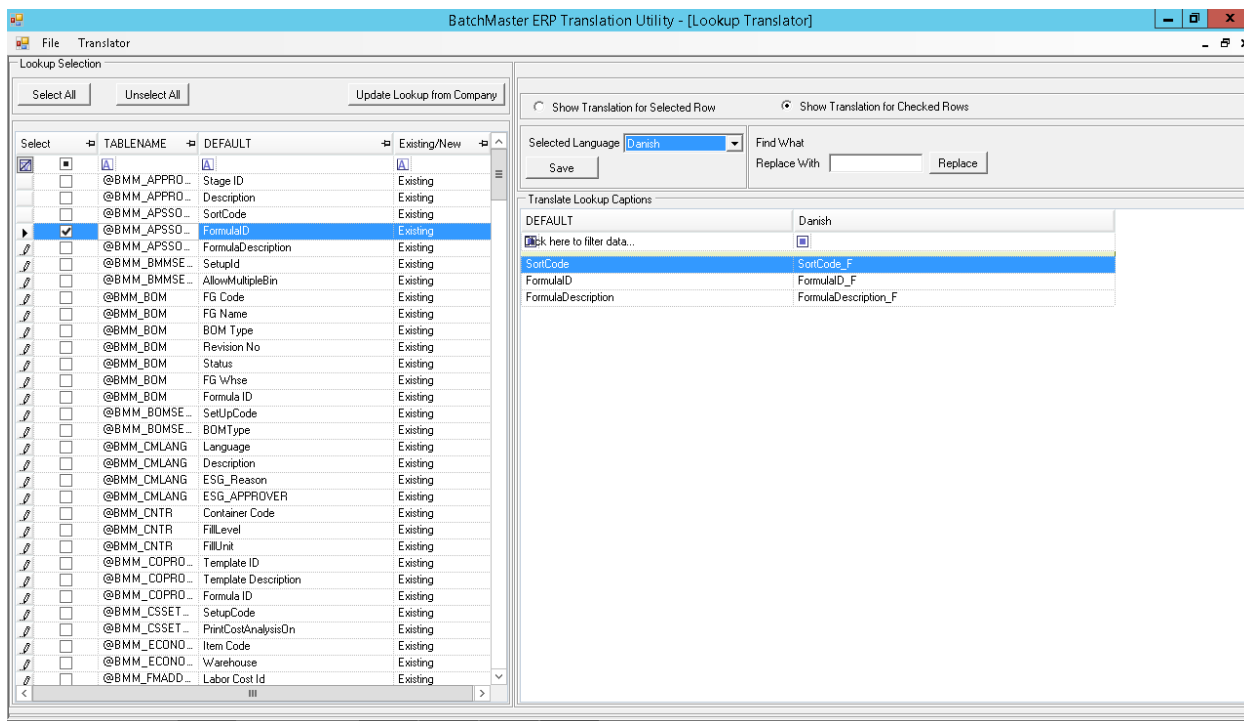


2.3.2.1 Working with Lookup Translation screen

1. Check the desired lookup that needs to be translated.
2. Choose the *Show Translation for Selected Row options* if require to display the screen elements of the selected row.
3. Select the *Show Translation for Checked Rows* option to display screen elements of all checked rows in the grid.
4. Using the selected language drop down choose the language in which lookup translation is to be carried out.
5. In the second column of the Translate Lookup Captions grid specify the modified text for the default lookup.
6. Click the *Save* button to save the modifications.

2.3.3 CFL Lookup Translator

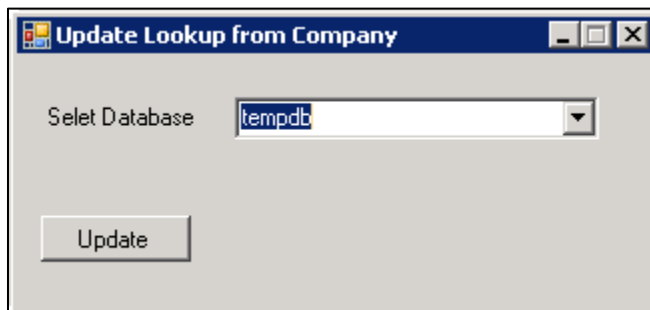
Using the CFL Lookup Translator you can translate the CFL lookup caption of BatchMaster ERP screens, in your preferred language.



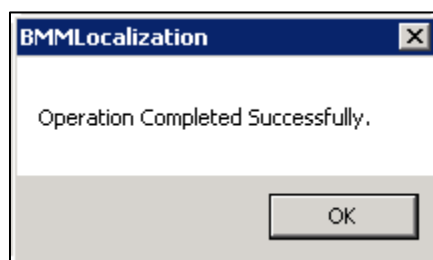
Select All: Clicking this button check all the checkboxes of table displaying in the grid.

Unselect All: Clicking this button deselect all the selected tables of the sliding segment.

Update Lookup from Company: Clicking this button display the window from which you can select the database to choose the lookup values from.



Once updated the system confirms by displaying the message as shown below:



The system would append the lookup details in the sliding *Lookup Selection* grid.

Show translation for selected row: Selecting this option displays the screen elements of the selected row in the sliding segment.

Show translation for checked rows: Selecting this option displays the screen elements of all checked rows in the sliding segment.

Selected Language: Using this dropdown, you can choose the language in which lookup elements need to be translated. The dropdown here enlists only the languages which are supported by SAP Business One.

Find What: Enhance search capabilities are provided within the grid to fetch the desired data. You can specify the search string in the header row of the *Translate Lookup Captions* grid. The string mentioned in the header row can be viewed in this field.

Replace With: Specify the string to replace the *Find What* text.

Replace: Clicking this button replace the string specified in the *Find what* field with the string specified in the *Replace with* field.

Save: Click this button to finally save the modifications to server database i.e. BMMResource.MDB.

The system automatically create a XML file of the BMMResource.MDB file and store it on the same shared folder (BMM_B1_SHR) on server.

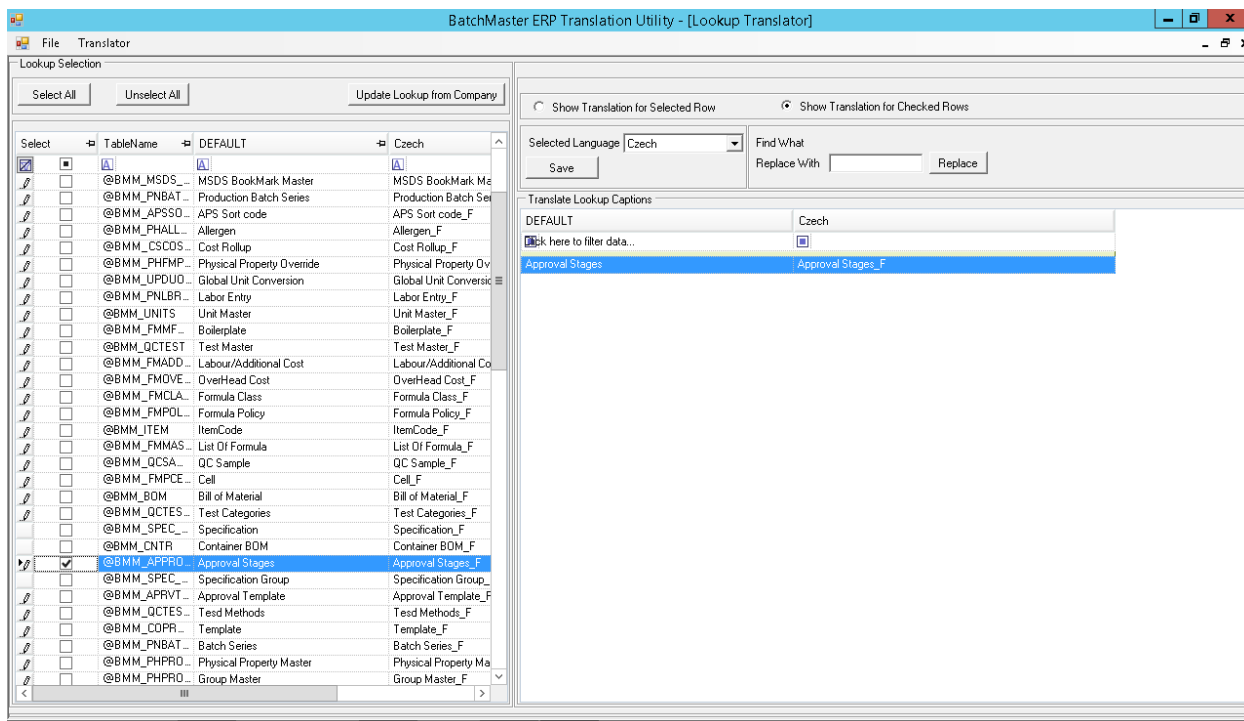


2.3.3.1 Working with CFL Lookup Translation screen

1. Check the desired lookup that needs to be translated.
2. Choose the *Show Translation for Selected Row options* if require to display the screen elements of the selected row.
3. Select the *Show Translation for Checked Rows* option to display screen elements of all checked rows in the grid.
4. Using the selected language drop down choose the language in which lookup translation is to be carried out.
5. In the second column of the Translate Lookup Captions grid specify the modified text for the default lookup.
6. Click the *Save* button to save the modifications.

2.3.4 CFL Lookup Title Translator

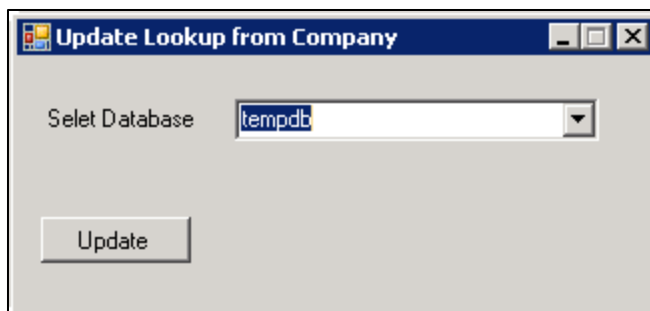
Using the CFL Lookup Title Translator screen you can translate the CFL lookup title of BatchMaster ERP screens, in your preferred language.



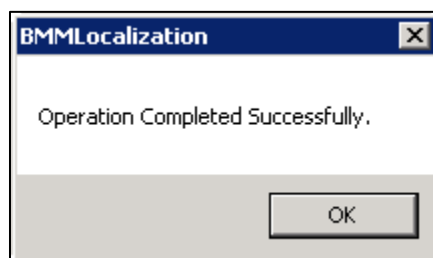
Select All: Clicking this button check all the checkboxes of table displaying in the grid.

Unselect All: Clicking this button deselect all the selected tables of the sliding segment.

Update Lookup from Company: Clicking this button display the window from which you can select the database to choose the lookup values from.



Once updated the system confirms by displaying the message as shown below:



The system would append the lookup details in the sliding *Lookup Selection* grid.

Show translation for selected row: Selecting this option displays the screen elements of the selected row in the sliding segment.

Show translation for checked rows: Selecting this option displays the screen elements of all checked rows in the sliding segment.

Selected Language: Using this dropdown, you can choose the language in which lookup elements need to be translated. The dropdown here enlists only the languages which are supported by SAP Business One.

Find What: Enhance search capabilities are provided within the grid to fetch the desired data. You can specify the search string in the header row of the *Translate Lookup Captions* grid. The string mentioned in the header row can be viewed in this field.

Replace With: Specify the string to replace the *Find What* text.

Replace: Clicking this button replace the string specified in the *Find what* field with the string specified in the *Replace with* field.

Save: Click this button to finally save the modifications to server database i.e. BMMResource.MDB.

The system automatically create a XML file of the BMMResource.MDB file and store it on the same shared folder (BMM_B1_SHR) on server.

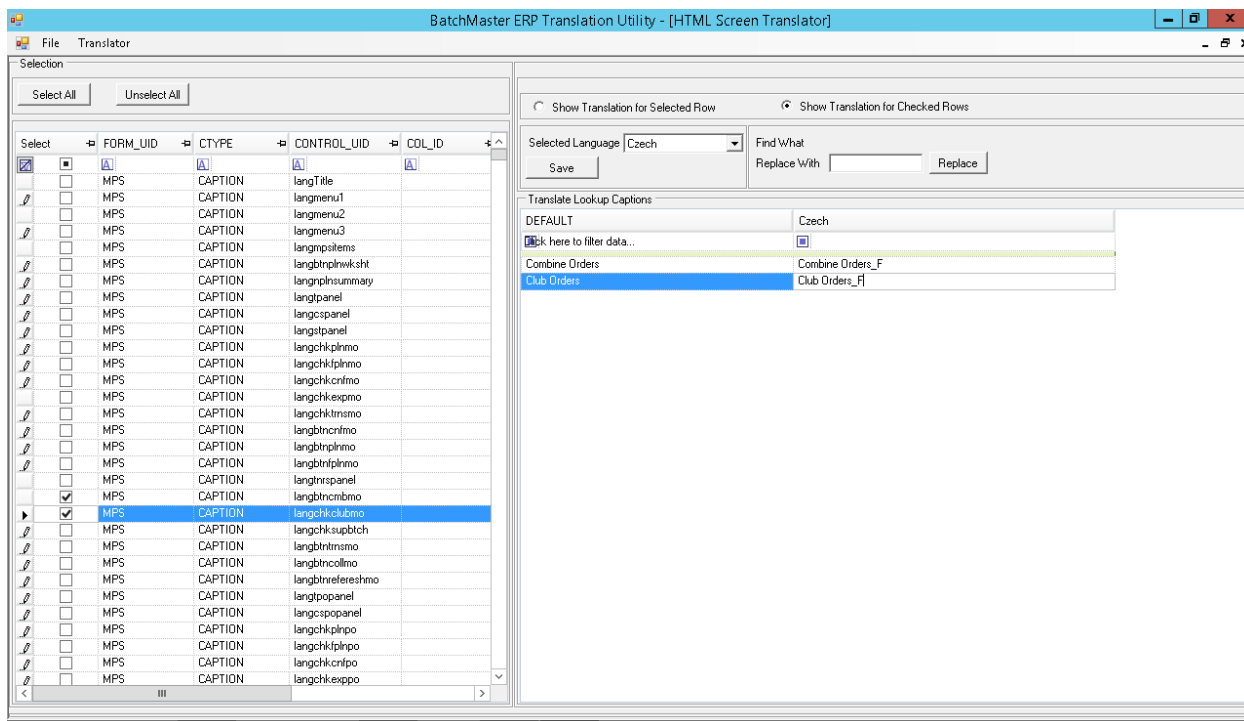


2.3.4.1 Working with CFL Lookup Translation screen

1. Check the desired lookup that needs to be translated.
2. Choose the *Show Translation for Selected Row options* if require to display the screen elements of the selected row.
3. Select the *Show Translation for Checked Rows* option to display screen elements of all checked rows in the grid.
4. Using the selected language drop down choose the language in which lookup translation is to be carried out.
5. In the second column of the Translate Lookup Captions grid specify the modified text for the default lookup.
6. Click the *Save* button to save the modifications.

2.3.5 HTML Screen Translator

Using the *HTML Screen Translator*, you can translate the screen elements of BatchMaster ERP HTML dashboard in your preferred language.



Select All: Clicking this button check all the checkboxes of table displaying in the grid.

Unselect All: Clicking this button deselect all the selected tables of the sliding segment.

Show translation for selected row: Selecting this option displays the screen elements of the selected row in the sliding segment.



Show translation for checked rows: Selecting this option displays the screen elements of all checked rows in the sliding segment.

Selected Language: Using this dropdown, you can choose the language in which lookup elements need to be translated. The dropdown here enlists only the languages which are supported by SAP Business One.

Find What: Enhance search capabilities are provided within the grid to fetch the desired data. You can specify the search string in the header row of the *Translate Lookup Captions* grid. The string mentioned in the header row can be viewed in this field.

Replace With: Specify the string to replace the *Find What* text.

Replace: Clicking this button replace the string specified in the *Find what* field with the string specified in the *Replace with* field.

Save: Click this button to finally save the modifications to server database i.e. BMMResource.MDB.

The system automatically create a XML file of the BMMResource.MDB file and store it on the same shared folder (BMM_B1_SHR) on server.

2.3.5.1 Working with HTML Screen Translator

1. Check the HTML dashboard screen whose elements need to be translated.
2. Choose the *Show Translation for Selected Row options* if require to display the screen elements of the selected row.
3. Select the *Show Translation for Checked Rows* option to display screen elements of all checked rows in the grid.
4. Using the selected language drop down choose the language in which lookup translation is to be carried out.
5. In the second column of the Translate Lookup Captions grid specify the modified text for the default lookup.
6. Click the *Save* button to save modifications.