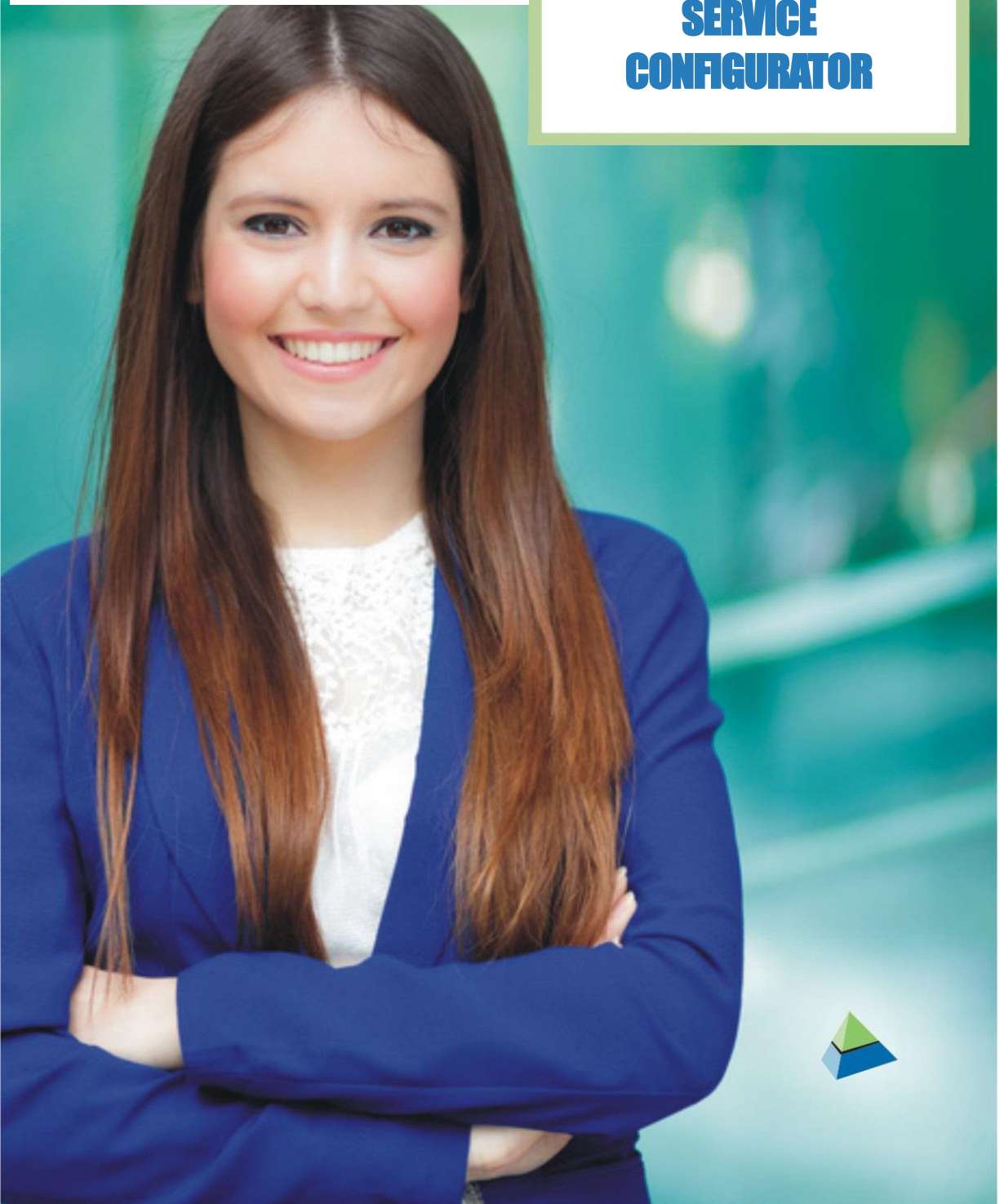


BATCHMASTER® ERP
18.2

User Guide

BatchMaster ERP with SAP Business One
BatchMaster Solutions for
Process Manufacturers

**SERVICE
CONFIGURATOR**





Copyright and Legal Information

Copyright

BatchMaster ERP with SAP Business One 18.2 – Service Configurator Functional Document © 2025 by BatchMaster Software. All rights reserved.

Your right to copy this document is limited by copyright law and the terms of the license agreement. As a software licensee, you may make a reasonable number of copies or printouts for your own use. Making copies for any other purposes constitutes a violation of copyright law.

Trademarks

The names of actual companies and products mentioned herein may be trademarks or registered marks of their respective owners in the United States or other countries.

The names of companies, products, persons, and/or data used in the examples are fictitious and are in no way intended to represent any real individual, company, product, or event, unless otherwise noted.

Warranty Disclaimer

BatchMaster Software disclaims any warranty regarding the example data in this documentation, including the warranties of merchantability and fitness for a specific business use.

Limitation of Liability

The content of this document is provided for informational use only, is subject to change without notice, and should not be construed as a commitment by BatchMaster Software. BatchMaster Software assumes no liability for any errors or inaccuracies that may appear in this document. Neither BatchMaster Software nor anyone else who has been involved in the creation, production, or delivery of this documentation shall be liable for any indirect, incidental, special, exemplary, or consequential damages, including but not limited to any loss of anticipated profit or benefits, resulting from the use of this documentation nor the examples contained herein.

License Agreement

Use of this product is covered by a **Software License, Services and Support Agreement** signed when your organization purchased BatchMaster ERP with SAP Business One.

Disclaimers

The information provided herein is not intended to replace the statutes, rules, or approved procedures that apply to your business. Instead, you should use this information to ensure compliance with internal, customer, and regulatory requirements. This training manual is considered to be proprietary and confidential and may not be reproduced for any reason other than stated below without prior written consent of BatchMaster Software.

Exclusion

This training manual has been prepared exclusively for ERP client end-user training. All other uses are prohibited without prior written consent from BatchMaster Software.

BME-B1 18.2 Service Configurator Functional Document © 2025 by BatchMaster Software. All rights reserved.



Contents

1	INTRODUCTION	1
2	CONFIGURATION	2
	2.1.1 Screen Field Description.....	2
2.2	Configuring Approvals	3
	2.2.1 Screen Field Description.....	4
2.3	Configuring MPS/MRP	6
	2.3.1 Screen Field Description.....	7



1 INTRODUCTION

The BatchMaster ERP Service Configurator is used to configure services such as Master Production Schedule (MPS), Material Requirements Planning (MRP), and approval procedures for the respective process manufacturing modules in BatchMaster ERP with SAP Business One (BatchMaster ERP). The *Service Configurator* is installed as part of the standard product in your BatchMaster ERP instance.

The Service Configurator resides in the Installation folder on your computer. Use the following path to access the **BMM_ServiceConfigurator.exe**:

C:\Program Files (x86)\BatchMaster ERP B1\BatchMaster Server\BMM_B1_SHR

This document contains detailed descriptions of the processes required to configure these services on your computer.



2 CONFIGURATION

Run the **BMM_ServiceConfigurator.exe** file, which resides in the *BatchMaster ERP Server* folder in the installed path.

On the ERP B1 Service Configurator screen you are required to specify basic details to establish a connection between the Database server and the Company database.

ERP B1 Service Configurator: Connected

Connection Properties

Database Server: schwritersap9\sqlexpress

Database Type: MSSQL2012

Database User: sa

Database Password: [Masked]

Get Company List

Mark the companies that will use the service

Approval MPS/MRP

Select	Company Name	Run Type	Run On	Run At	Error Message
<input type="checkbox"/>	BMM163	Daily		00	
<input checked="" type="checkbox"/>	QASQL70_164	Daily	1	17	
<input type="checkbox"/>	*	Daily		00	

Configure

2.1.1 Screen Field Description

Database Server: Enter the name of the server on which your database resides. This will help the Service Configurator identify server details.

Database Type: The *Database Type* field is populated by default. The drop-down menu includes the list of database types that are available in your computer and are compatible with the software. Select the appropriate version from the drop-down menu.

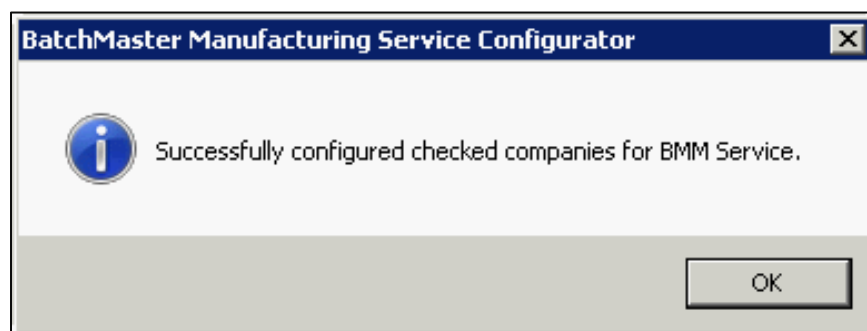
Database User: Enter the name of the Database user.



Database Password: Enter the password for the above entered *Database User*.

Get Company List: Click the *Get Company List* button to view the names of all companies that are configured in the database of your BatchMaster ERP instance. Mark the Companies that will use the service by checking the checkbox box corresponding to the company name. The selected company will be configured to the service. If required, you can change, add, or remove companies at any time by selecting or deselecting the checkboxes that correspond to each company.

Configure: Click the *Configure* button to configure the approval procedure for the selected companies. The following message will appear:

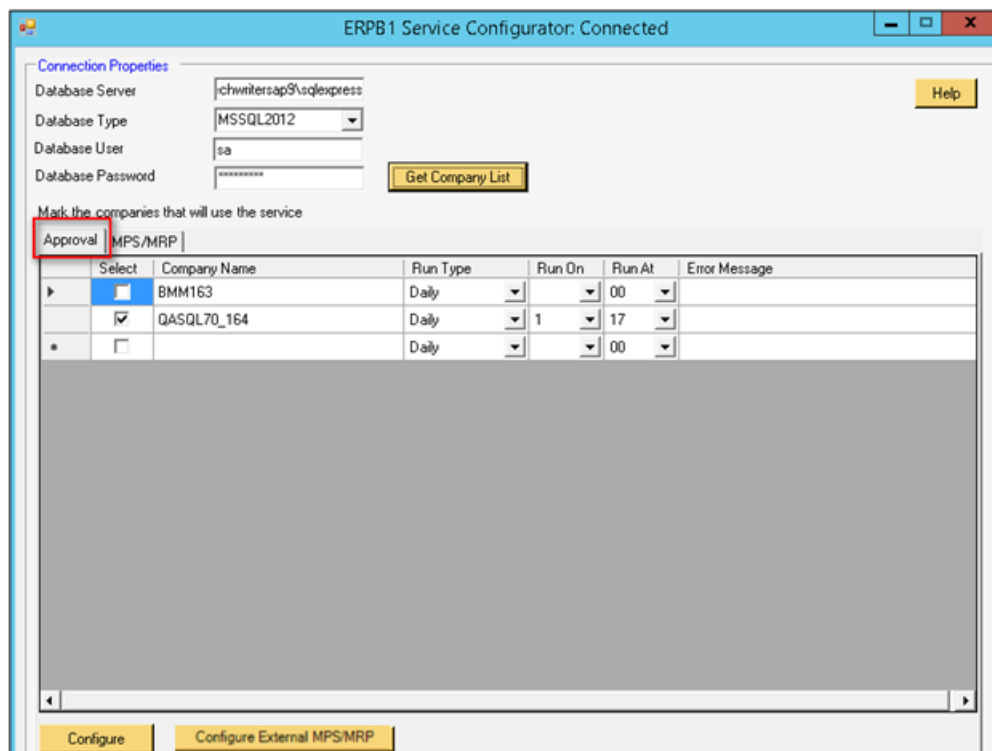


2.2 Configuring Approvals

The *Approval Procedure Module* is one of the most important modules in BatchMaster ERP. It plays a vital role in storing, displaying, and updating information about the approval processes required in various modules during production.

Each document requiring approval must pass through a set of people who validate it before it can be used in the business. The group of approvers is selected based on the authority involved, their knowledge, and their level of responsibility.

Configuring Approval service will automatically make the formula operative as soon as system reaches the effective date of the formula.



2.2.1 Screen Field Description

Select: Check this checkbox to select the company database for which you are configuring the Approval service.

Company Name: Displays the name of the company database.

Run Type: Using the drop-down menu, configure the service as *Daily*, *Weekly*, or *Monthly*.

Run On: The *Run On* field contains day-related information, and hence it appears disabled (i.e., as the default setting) when you select the *Daily* option in the *Run* field. When you select the *Weekly* option, the system displays zero to six numbers that represent the following:

- Zero represents Sunday.
- One represents Monday.
- Two represents Tuesday.
- Three represents Wednesday.
- Four represents Thursday.
- Five represents Friday.
- Six represents Saturday.

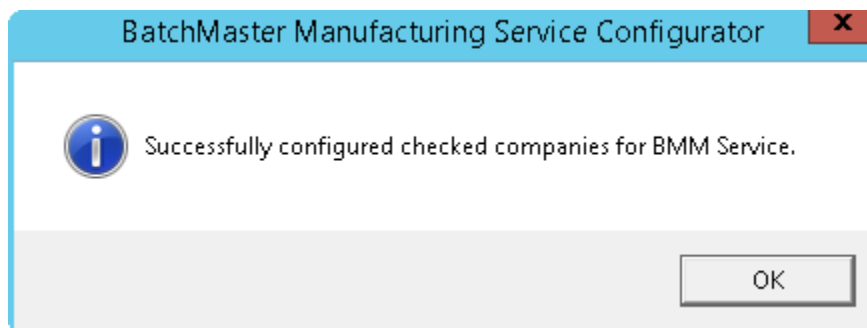


When you select the *Monthly* option, the drop-down menu will list numbers from one to thirty-one (31), representing a number for each day.

Run At: The *Run At* field contains a drop-down menu displaying the time at which you can run the Approval service. The time slots are available from zero to twenty-three (23), representing the hours of the day.

Error Message: Displays any error message.


Once you have provided the required information in the fields, click the *Configure* button to configure the settings. On successful configuration, a message appears as below:



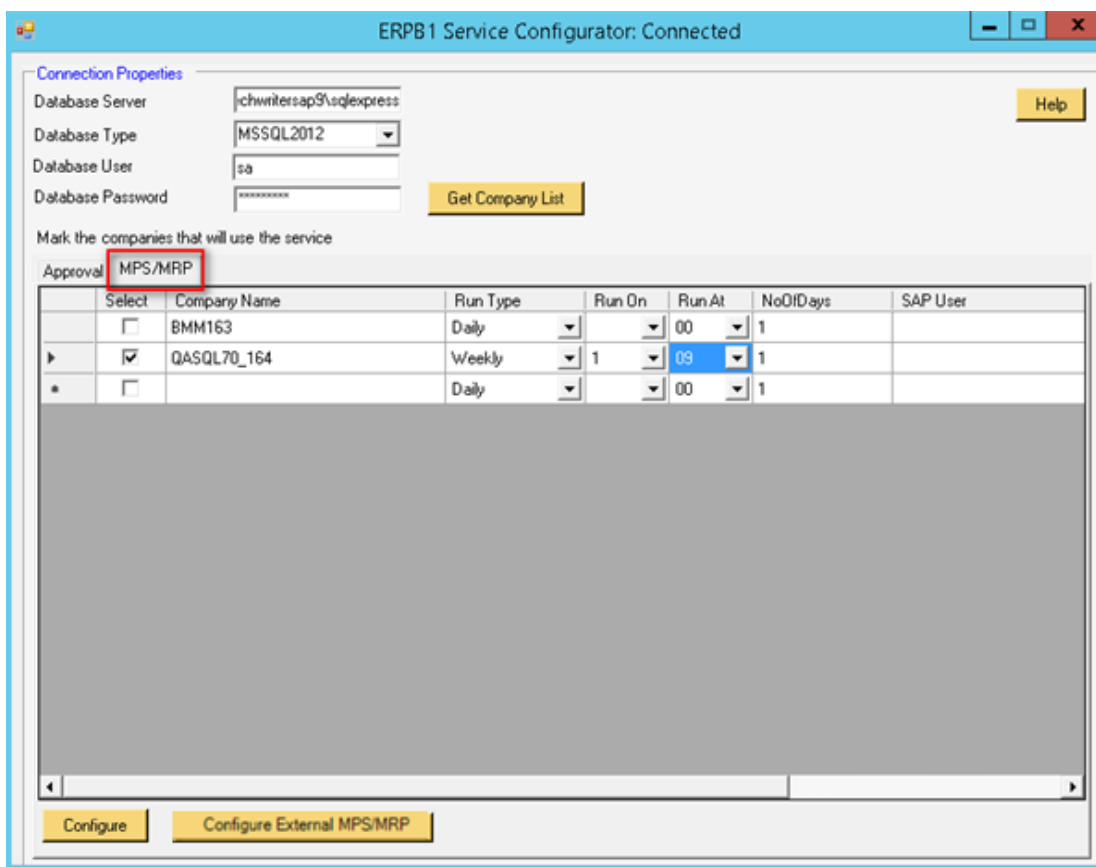


2.3 Configuring MPS/MRP

The *Master Production Schedule* and *Material Requirements Planning* modules play a vital role in optimizing inventories to help match supply and demand. Configuring MPS/MRP service will automatically run the MPS/MRP engine in the scheduled time interval.

 **Prerequisite:** Every item in your inventory must have an *Item Master* record, including Item Master Details. Maintain MPS/MRP is needed to control items as MPS/MRP types.

Switch to the MPS/MRP tab to configure the services. The companies are auto-populated into the selection pane. Select the companies for which you want to schedule the service.



The screenshot shows the 'ERPB1 Service Configurator: Connected' window. It has a 'Connection Properties' section with fields for Database Server, Database Type, Database User, and Database Password. Below this is a 'Mark the companies that will use the service' section with an 'Approval' dropdown set to 'MPS/MRP'. A table lists companies with columns for Select, Company Name, Run Type, Run On, Run At, NoOfDays, and SAP User. The 'QASQL70_164' row is selected and highlighted in blue.

Select	Company Name	Run Type	Run On	Run At	NoOfDays	SAP User
<input type="checkbox"/>	BMM163	Daily		00	1	
<input checked="" type="checkbox"/>	QASQL70_164	Weekly	1	09	1	
<input type="checkbox"/>		Daily		00	1	



2.3.1 Screen Field Description

Select: Check this checkbox to select the company database for which you are configuring the service.

Company Name: Displays the name of the company database.

Run Type: Using the drop-down menu, configure the service as *Daily*, *Weekly*, or *Monthly*.

Run On: The *Run On* field contains day-related information, and hence it appears disabled (i.e., as the default setting) when you select the *Daily* option in the *Run* field. When you select the *Weekly* option, the system displays zero to six numbers that represent the following:

- Zero represents Sunday.
- One represents Monday.
- Two represents Tuesday.
- Three represents Wednesday.
- Four represents Thursday.
- Five represents Friday.
- Six represents Saturday.

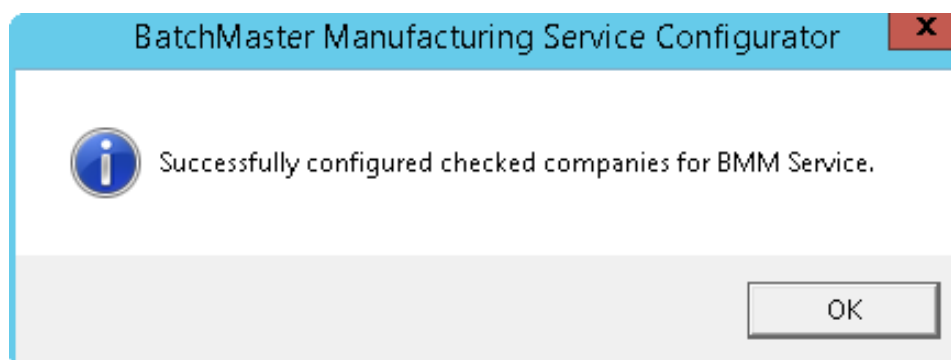
When you select the *Monthly* option, the drop-down menu will list numbers from one to thirty-one (31), representing a number for each day.

Run At: The *Run At* field contains a drop-down menu displaying the time at which you can run the MPS or MRP service. The time slots are available from zero to twenty-three (23), representing the hours of the day.

No. of Days: Select a number of days for which MPS/MRP planning is needed.

SAP User: Specify a user who is authorized to run the MPS/MRP Service.

Configure: Once you have provided the required information in the fields, click the *Configure* button to configure the settings. On successful configuration, the message appears as below:





Configure External MPS/MRP: To run the MPS/MRP externally you need to enable Run MRP/MPS externally from Planning Defaults screen and then configure MPS/MRP xml file.

The screenshot shows the 'Planning Defaults' dialog box. The 'Run MPS External' and 'Run MRP External' checkboxes are checked and highlighted with a red box. Other settings include: Time Fence (empty), Planning Calendar (PL01), Demand Range1 (Demand), Demand Range2 (Demand+Forecast), Demand Range3 (Greater of Demand), Display Color (Black), Top level finished goods to be created as (Fill), Difference between delivery and order date (1), Series to be used to create POs (Primary), and Planning period (30).

Once you have set the prerequisites, click the Configure External MPS/MRP button to update the user's details in the MPSMRPBackground.xml file. The system will save username, userpassword in encrypted format with in xml file as shown below.

```
*MPSMRPBackgroundRun.xml - Notepad
File Edit Format View Help
<?xml version="1.0" encoding="utf-8"?>
<configuration>
  <Companies>
    <Company name="DONOTUSE181" UserName="vinay" UserPassword="MWPY1IcIeI88+1L8c1P/gw==" />
  </Companies>
</configuration>
```

Similarly, when you click the configure button, the MPS/MRP Service running xml file will also have Userpassword in encrypted format after maintaining data at Service Configurator screen.



```
MPSMRPServiceConfiguration.xml - Notepad
File Edit Format View Help
<?xml version="1.0" encoding="utf-8"?>
<configuration>
  <Companies>
    <Company name="DONOTUSE181" ServerName="SAP13" UserName="vinay" UserPassword="MwPy1IcIeI88+1L8c1P/gw==" BatchMasterDBPassword="IQirUubBnG00qCbmpdhaTg=="
    DBUser="BatchMaster" MPSMRPRunOn="Daily" MPSMRPRunAt="Monthly" MPSMRPRunPeriod="10" MPSMRPNoOfDays="0" ServerType="MSSQL" ServerType1="15" />
  </Companies>
</configuration>
```